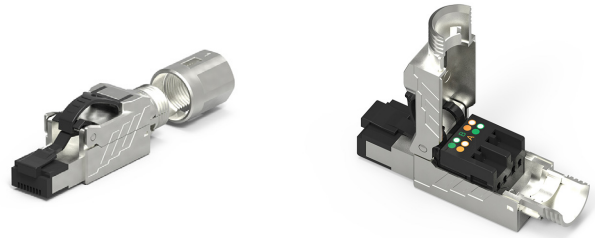


RJ45 CAT8 TOOL LESS SHIELDED PASSTHROUGH (SOLID / STRANDED) CONNECTOR

SKUS C8S-EZPT

FEATURES

- Category 8 RJ45 Shielded Tool-less Passthrough Connector 19.5 x 58.2 x 14 mm
- Ensure long-lasting durability and reliable performance with fully shielded housing, guarding against corrosion and shielding from EMI (ElectroMagnetic Interference)
- Recommend using a cable stripper to expose the inner conductors for best results
- Compatible with 22-26 AWG, 6.5mm - 8.5mm OD Cat8 SOLID or STRANDED cable
- Backwards compatible with previous keystone jack standards
- Supports speeds of up to 40Gbps, making it four times faster than Cat. 6A
- Offers excellent performance with POE++ applications
- UL approved, RoHS compliant, meets ANSI/TIA-568.2-D standard



AVAILABLE COLOURS



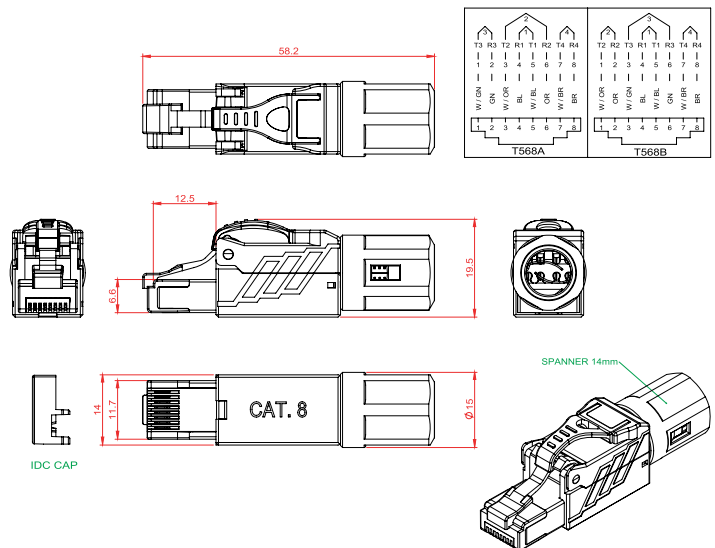
SIZE (WxDxH) 19.5 x 58.2 x 14 mm

MATERIALS

SHIELD CONTACT	Nickel silver alloy
PLUG HOUSING	Zinc alloy, Nickel plated
CONTACT HOLDER	PC / UL94V-0
PLUG CONTACTS	Phosphor bronze, 50u" gold plated on contact area
IDC PLASTIC	PC / UL94V-0
IDC TERMINALS	Phosphor bronze, Tin over nickel undercoat

SPECIFICATIONS

INSULATION LIFE	750 mating cycles
PLUG RETENTION FORCE	11 LBF (min.)
INSERTION FORCE	30 N (max.)
RE-TERMINATION	Up to 20 times
CONTACT COMPATIBILITY	22 - 26 AWG Solid or Stranded
CABLE JACKET DIA.	6.5 mm - 8.5 mm
OPERATION TEMPERATURE	-10 – +60 Degrees Celsius
STORAGE TEMPERATURE	-40 – +68 Degrees Celsius
HUMIDITY	10% – 90% RH (Non-condensing)
TOLERANCE	X ± 1 .X ± 0.2 .XX ± 0.05



INSULATION RESISTANCE	500M ohms (min.)
DC CURRENT RATING	1.5 Amps
INPUT TO OUTPUT D.C. RESISTANCE FOR SHIELD	100m ohms (max.)
INPUT TO OUTPUT D.C. RESISTANCE	200m ohms (max.)
CONTACT RESISTANCE	20m ohms (max.)
VOLTAGE PROOF (CONTACT TO CONTACT)	1000V D.C. or A.C. Peak
VOLTAGE PROOF (CONTACT TO SHIELD)	1500V DC

© PC Cable World. All rights reserved.

PC Cable World product specifications are subject to change without notice, but are accurate at the time of printing. Please contact a sales representative for current specs. Please note that all physical specifications are nominal.