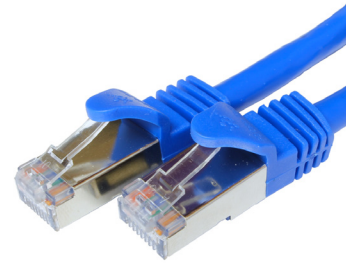


CAT6A SHIELDED F/UTP NETWORK PATCH CABLE 26AWG (BLUE)

SKUS	CCA-001BL	(1')	CCA-15BL	(15')
	CCA-01BL	(1.5')	CCA-25BL	(25')
	CCA-03BL	(3')	CCA-50BL	(50')
	CCA-05BL	(5')	CCA-75BL	(75')
	CCA-07BL	(7')	CCA-100BL	(100')
	CCA-10BL	(10')		



FEATURES

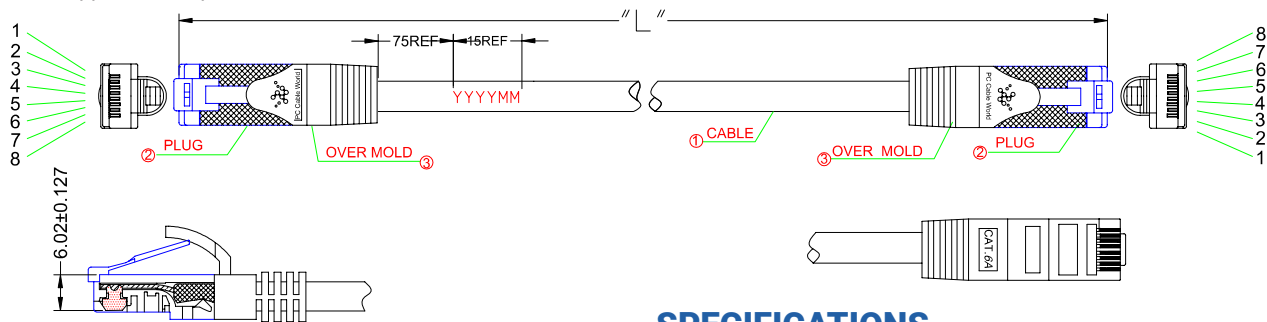
- Category 6A 4-Pair F/UTP Shielded Blue Stranded Copper Network Cable 26 AWG
- Use for voice, data, video distribution, and security applications requiring shielding
- Improved attenuation provides cleaner data and video transmissions compared to previous Cat6 standards
- Shielded with aluminum polyester tape and stranded 26 AWG tinned copper drain wire to protect data signal integrity from EMI/RFI
- Molded, snag-less boot prevents unwanted cable snags during installation and provides extra strain relief
- Ethernet 1000 BASE-T; 100 BASE-TX; 1000 BASE-T, 10G BASE-T (IEEE 802.3)
- Meets and/or Exceeds EIA/TIA 568 C.2-1
- 50 micron gold-plated copper alloy contact, shielded RJ45 8P8C modular plug
- UL CM & CSA CMG Certification
- FT4 rating for in-wall use
- Tested for applications up to 500MHz bandwidth

AVAILABLE COLOUR



Pin Assignment:

Pos. No.	T568B WIRING (PC TO HUB)	Pos. No.
1	Orange	1
2	White/Orange	2
3	Green	3
6	White/Green	6
4	White/Blue	4
5	Blue	5
7	Brown	7
8	White/Brown	8
Shell	Drain Wire	Shell



MATERIALS

CABLE (1)	Cat6A F/UTP 26AWG(7/0.16)*4P+AE
JACKET	PVC (OD 6.0 ± 0.2 mm) CMG/FT4
PLUG (2)	RJ-45 8P8C Modular Plug, Shielded Contact: Copper alloy 50 Micro-inches, Gold plated Shell: Nickel Plated, Loading bar Plug
OVER MOLD (3)	PVC, 75P

SPECIFICATIONS

MEETS CAT6A EIA/TIA 568 C.2-1 | ROHS COMPLIANT

SKUS	LENGTH	SKUS	LENGTH
CCA-001BL	1' (305mm±20mm)	CCA-15BL	15' (4572mm±50mm)
CCA-01BL	1.5' (457mm±20mm)	CCA-25BL	25' (7620mm±50mm)
CCA-03BL	3' (914mm±20mm)	CCA-50BL	50' (15420mm±100mm)
CCA-05BL	5' (1524mm±30mm)	CCA-75BL	75' (22860mm±200mm)
CCA-07BL	7' (2134mm±30mm)	CCA-100BL	100' (30480mm±200mm)
CCA-10BL	10' (3048mm±50mm)		

© PC Cable World. All rights reserved.

PC Cable World product specifications are subject to change without notice, but are accurate at the time of printing. Please contact a sales representative for current specs. Please note that all physical specifications are nominal.