

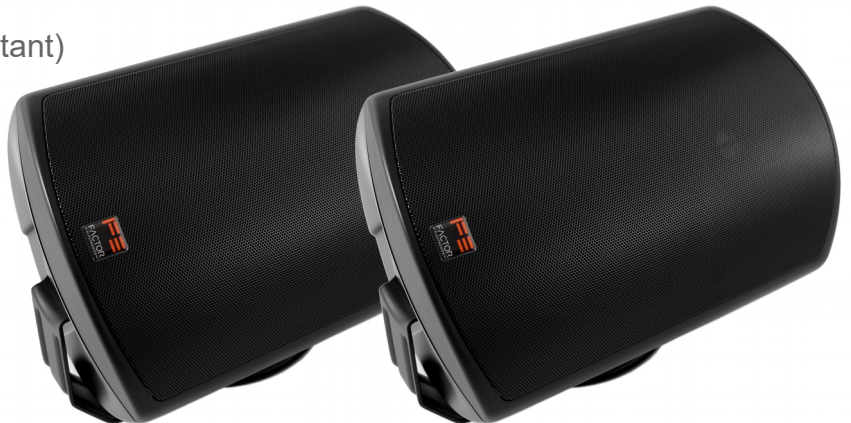
Features:

Hi fidelity 8" surface mount speaker system (PAIR)
Suitable for indoor or outdoor use
IP66 dirt/dust/moisture rated
Smooth-wide frequency response
Excellent fidelity for music or voice
8" **Graphite** woofer cone
Rubber woofer surround
30oz ported Ferrite woofer magnet
1 inch **titanium** dome tweeter
Neodymium tweeter magnet
PTZ tweeter protection with auto reset
High quality crossover with air core inductor
Aluminum non-rusting grille
Multi-position pivoting aluminum mounting brackets
Mounts vertically or horizontally
Gold plated 12awg binding posts
Includes internal 50watt 25/70 volt transformer
Transformer includes 8 ohm bypass setting
Sold as pairs
Master carton 1 pair
1 year warranty



Specifications:

IP66 rated (dust/dirt/powerful jet water resistant)
Diameter Woofer 8" (203mm) graphite
Diameter Tweeter 1" (25.4mm) titanium
Power Handling 140watts RMS
Impedance 8 ohms (nominal)
Frequency Response 56Hz - 20kHz (±5dB)
Dispersion 110 °
Sensitivity 90dB (1W 1M) Average
Grille/Bracket material Aluminum
Color Black



Included:

Internal Transformer 50 watts 25/70 volt
Wattage taps 50w, 25w, 12.5w, 6.5w & 8ohms
Pivoting powder coated aluminum mounting brackets x 2

Horizontal or vertical mounting

Dimensions:

Dimensions Overall
Height 14.7" (360mm)
Width 9.64" (245mm)
Depth 9.05" (230mm) including bracket
Shipping Weight 25.0lbs (11.38kg) per pair



Sealed IP66 Connections