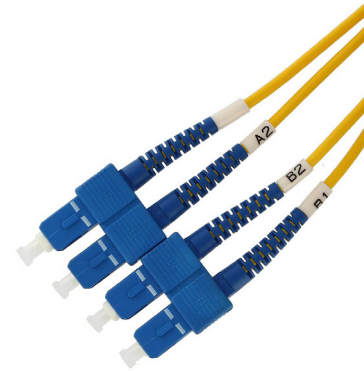


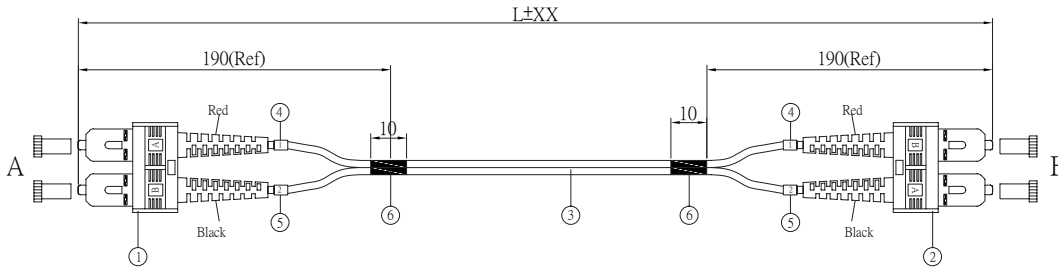
SC-SC SM DUPLEX 9/125 FIBER OPTIC CABLE

SKUS	SC-SC03SD	(3')	SC-SC25SD	(25')
	SC-SC06SD	(6')	SC-SC33SD	(33')
	SC-SC10SD	(10')	SC-SC50SD	(50')
	SC-SC15SD	(15')		



FEATURES

- SCSC Single-Mode Duplex Cable 9/125µm
- Use for transmitting gigabit data signals for telecommunications, such as local area networks or fiber to home applications
- Capable of greater speeds and distances than multi-mode cable
- Has low insertion loss, low back reflection loss, and isn't subjected to electromagnetic effects such as cross-talk or external interference
- Contains two fibers, supporting the flow of data in two directions
- Made with high quality Corning glass fiber core for durability and lower attenuation
- Robust snap-in Square Connectors (SC) are commonly found on media converters
- Premium grade ceramic ferrules with polished contacts to ensure optimal performance
- Environmentally stable, can be used in areas with volatile vapours



MATERIALS

(1) CONN A/B	SC duplex conn/UPC
(2) CABLE	Coring optical fiber cable 9/125 SM, MM OFNR (UL) MM/YY XXXXXM, Yellow
(3) MARKER RING 1	L=3.7mm, Colour: White, Print 1, Text colour: Black
(4) MARKER RING 2	L=3.7mm, Colour: White, Print 2, Text colour: Black
(5) H.S. TUBE	Heat shrinking tube, Black, ID=3mm, L=10mm

LENGTH TABLE

3FT	914±20mm	25FT	7620±50mm
6FT	1824±30mm	33FT	10032±100mm
10FT	3048±50mm	50FT	15240±100mm
15FT	4572±50mm		

SPECIFICATIONS

TIA/EIA-568B.3 BELLCORE GR-020 UL OFNR/FT4 STANDARD	INSERTION LOSS	≤ 0.3 dB
OPERATION TEMPERATURE	RETURN LOSS	≥ 35 dB
STORAGE TEMPERATURE	MINI BENDING RADIUS	6cm (Loaded) 3cm (Unloaded)
TOLERANCE		.X ± 0.3 .XX ± 0.1 .XXX ± 0.05

© PC Cable World. All rights reserved.

PC Cable World product specifications are subject to change without notice, but are accurate at the time of printing. Please contact a sales representative for current specs. Please note that all physical specifications are nominal.