

# RJ45 CAT5E SHIELDED SLIM KEYSTONE JACK (110 PUNCH DOWN)

**SKUS** SJ-71S

## FEATURES

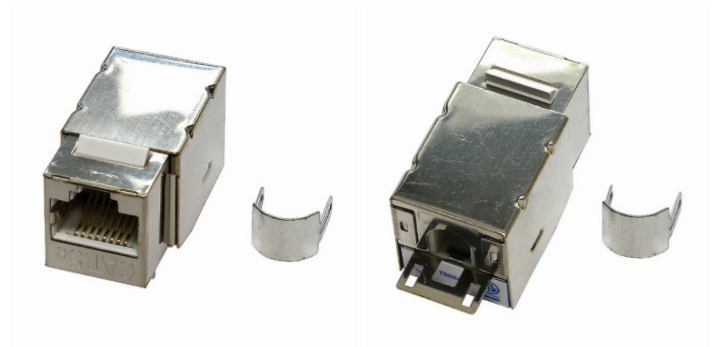
- Category 5E UTP RJ45 Shielded Slim Keystone  
17.3 x 38.5 x 22.3 mm
- Metal termination cap for terminating Cat5e cable, with metal cable clamps to secure wire
- Use with 22-26 AWG Cat5E cable
- Snap in for use with standard sized wall plates, surface-mount boxes, or unloaded patch panels
- 90° wire connection
- Backwards compatible with previous keystone jack standards
- UL approved, 3P Third Party Tested, RoHS compliant, meets C5E EIA/TIA 568A/B Standard, cETLus certified

## MATERIALS

<b>BODY</b>	Fireproof ABS UL-94V0
<b>METALLIC CASE</b>	Metal
<b>JACK</b>	8P8C 50 Micro-inches gold plated
<b>PCB</b>	FR-4 / UL-94V0
<b>IDC BODY</b>	Fireproof ABS UL-94V0
<b>IDC PIN</b>	Bronze & Tinned
<b>IDC DESCRIPTION</b>	For 22-26 AWG For 110 punch-down Tool

## SPECIFICATIONS

<b>UL APPROVED   3P THIRD PARTY TESTED   ROHS COMPLIANT</b>	<b>INSULATION RESISTANCE</b>	500M ohms (min.)	
<b>MEETS C5E EIA/TIA 568A/B STANDARD   CETLUS CERTIFIED</b>	<b>CONTACT RESISTANCE</b>	20m ohms (max.)	
<b>IDC PUNCH DOWN CYCLE</b>	Over 250 Cycles (min.)	<b>CURRENT RATING</b>	1.5 Amps
<b>JACK INSERTION CYCLE</b>	Over 2000 Cycles (min.)	<b>DC RESISTANCE</b>	0.1 ohms (max.)
<b>OPERATION TEMPERATURE</b>	-40 — +70 Degrees Celsius	<b>WITHSTANDING VOLTAGE</b>	1000 VAC RMS @ 60Hz/1min
<b>TOLERANCE</b>	X ± 1   .X ± 0.2   .XX ± 0.15		



## AVAILABLE COLOURS



**SIZE (WxDxH)** 17.3 x 38.5 x 22.3 mm

