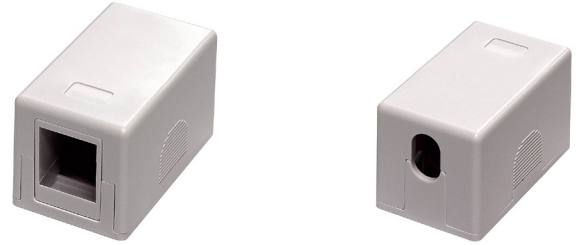


1-PORT KEYSTONE SURFACE MOUNT BOX

SKUS SJ-001B

FEATURES

- 1-Port White Surface Mount Box for mounting wire termination completed on the external side of a wall
- Easy open and close snap cover for inserting or removing keystone
- Universal shape allows for use with compatible Cat5E, Cat6 or Cat6A keystone inserts
- Includes a variety of mounting options for easy installation: screws for wall-mounting, padded dual sided tape for hard or delicate surfaces, and a cable tie for strain relief
- UL approved, RoHS compliant, cULus listed



AVAILABLE COLOURS



SIZE (WxDxH) 30 x 30 x 50 mm (± 0.2 mm)

MATERIALS

BOX	ABS, UL-94V-0
BRACKET	ABS, UL-94V-0
SCREW TYPE	M4, 14 x 7mm

SPECIFICATIONS

UL APPROVED ROHS COMPLIANT CULUS LISTED
TOLERANCE X ± 1 .X ± 0.2 .XX ± 0.15
OPERATION TEMPERATURE -40 – +70 Degrees Celsius

