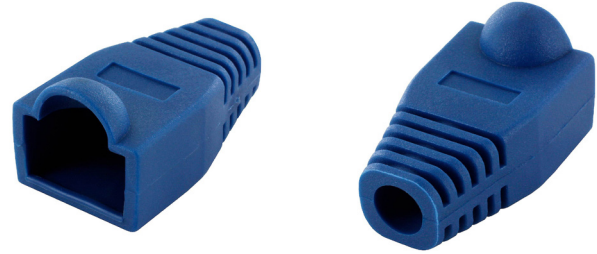


# RJ45 CAT5E PRE-INSERT BOOT

<b>SKUS</b>	RJ-45BK	(Black)	RJ-45PU	(Purple)
	RJ-45BL	(Blue)	RJ-45RD	(Red)
	RJ-45GN	(Green)	RJ-45WT	(White)
	RJ-45GY	(Grey)	RJ-45YL	(Yellow)
	RJ-45OR	(Orange)		



## FEATURES

- Category 5E Pre-Insert Boot 14.5 x 27.5 x 15.5 mm (± 0.5mm)
- When terminating Cat5E cable, use in combination with RJ45 Cat5E Connectors to protect the connector's latching tab
- Depress the cover locking tab to the tab's thickness to insert
- Multiple colours for colour coding installation cables and their uses
- Outer Diameter: 5.7mm
- Compatible with unshielded or shielded Cat5E Cable
- Release in-use cables easier in with use of the pliable boot

## AVAILABLE COLOURS



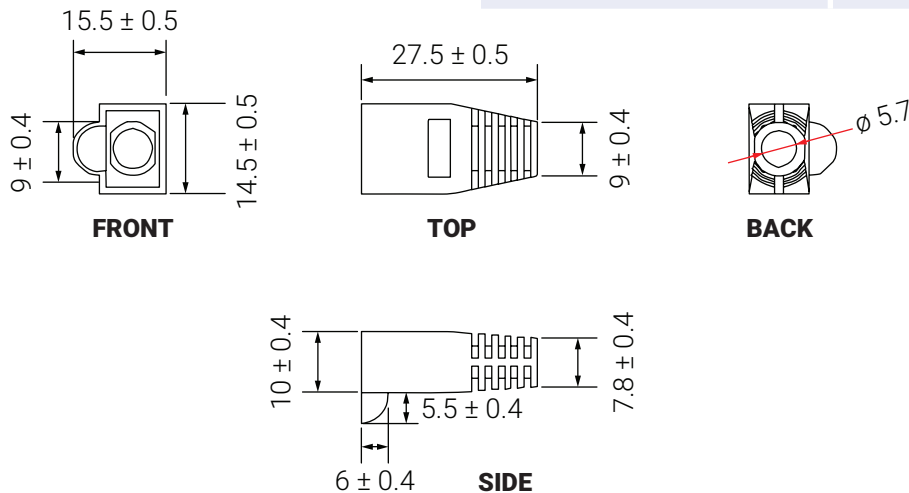
**SIZE (WxDxH)** 14.5 x 27.5 x 15.5 mm (± 0.5mm)

## MATERIALS

<b>BOOT</b>	PVC
-------------	-----

## SPECIFICATIONS

<b>ROHS COMPLIANT</b>	
<b>CABLE LENGTH UNLESS OTHER SPEC. TOLERANCES</b>	
0 - 200mm	± 10mm
201 - 1000mm	± 20mm
1001 - 1500mm	± 25mm
1501 - 2100mm	± 30mm
> 2100mm	± 40mm



© PC Cable World. All rights reserved.

PC Cable World product specifications are subject to change without notice, but are accurate at the time of printing. Please contact a sales representative for current specs. Please note that all physical specifications are nominal.