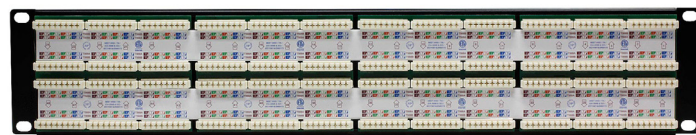
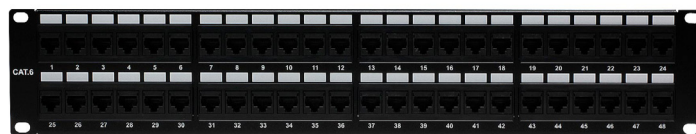


RJ45 CAT6 48-PORT LOADED PATCH PANEL (110 TYPE)

SKUS C6-4548

FEATURES

- 2U 48-Port Loaded RJ45 Category 6 Patch Panel, with T568A/B colour coded wiring patterns
- Rack-mountable, fits within any standard 19" rack or cabinet
- Use with 110 punch-down tool with keystones for terminating 22-26 AWG Cat6 cable
- Labels on the front provide space for adding identification, with an additional port numbering system on the front and rear of the patch panel
- Meets ANSI/EIA/TIA 568B AND ISO/IEC 11801 & EN50173 standards, RoHS compliant, Third Party Tested, and cETLus Intertek Listed
- Mounting hardware not included with patch panel



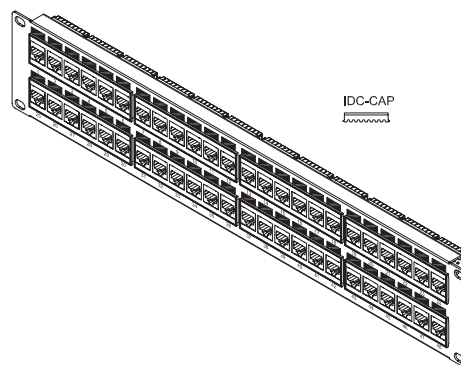
AVAILABLE COLOURS



SIZE (WxDxH) 482 x 30 x 88 mm

MATERIALS

FRONT PLATE	Fireproof ABS UL-94V0
PANEL	Metal (SPCC)
JACK	8P8C 50 Micro-inches gold plated
PCB	FR-4 / UL-94V0
IDC CAP	Fireproof ABS UL-94V0
IDC BODY	Fireproof ABS UL-94V0
IDC PIN	Bronze & Tinned
IDC DESCRIPTION	For 22-26 AWG For 110 punch-down tool



SPECIFICATIONS

UL APPROVED 3P THIRD PARTY TESTED ROHS COMPLIANT		INSULATION RESISTANCE		500M ohms (min.)
MEETS C6 EIA/TIA 568A/B STANDARD CETLUS CERTIFIED		CONTACT RESISTANCE		20m ohms (max.)
IDC PUNCH DOWN CYCLE	Over 250 Cycles (min.)	CURRENT RATING		1.5 Amps
JACK INSERTION CYCLE	Over 2000 Cycles (min.)	DC RESISTANCE		0.1 ohms (max.)
OPERATION TEMPERATURE	-40 — +70 Degrees Celsius	WITHSTANDING VOLTAGE		1000 VAC RMS @ 60Hz/1min
TOLERANCE	X ± 1 .X ± 0.2 .XX ± 0.15			

© PC Cable World. All rights reserved.

PC Cable World product specifications are subject to change without notice, but are accurate at the time of printing. Please contact a sales representative for current specs. Please note that all physical specifications are nominal.

www.pccableworld.com