

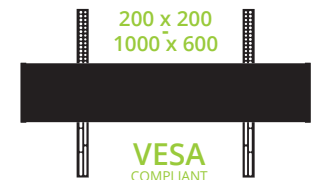
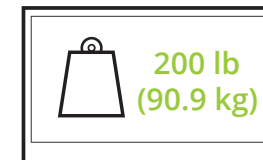
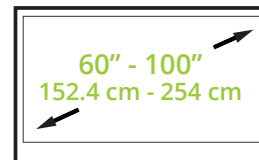
# MTMA100PL

Designed to safely support 200 pounds, the MTMA100PL rolling TV stand is built with high-grade aluminum to provide a lightweight, fully portable TV mounting solution for schools and offices. Its camera shelf and height adjustable device tray allow you to conveniently carry your AV equipment, while two handles and four wheel-locks ensure maximum stability. Quick to assemble, this modern TV cart features 12" of height adjustment, as well as integrated cable management to ensure a clean and professional looking setup.



## FEATURES & SPECIFICATIONS

- Fits most 60" to 100" TVs
- Supports 200 lb (90.9 kg)
- Accommodates VESA sizes from 200x200 to 1000x600
- Height adjustable up to 66.5" (169 cm) from the floor to center of TV
- Adjustable device tray capable of supporting 25 lb (11.4 kg)
- Top shelf suitable for a webcam
- Built-in handle allows for easy maneuvering
- Integrated cable management
- Four wheel locks can be applied and released with your foot
- Solid aluminum and steel construction with durable powder coated finish
- Assembly manual and all TV mounting hardware is included
- Five year manufacturer's warranty
- Shipping box weight: 91.3 lb (41.5 kg)
- Shipping box dimensions: 47.4" x 22.2" x 10.4" (120.5 x 56.5 x 26.5 cm)
- Product weight: 78.7 lb (35.8 kg)
- UPC: 800152715339





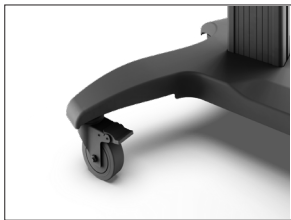
## ALUMINUM CONSTRUCTION

Capable of supporting 200 pounds, the lightweight aluminum structure makes it incredibly easy to roll your TV and accessories around any home or office setting.



## DEVICE TRAY & CAMERA SHELF

Use the height adjustable device tray to carry your laptop, PVR, or other AV hardware weighing up to 25 pounds. A top shelf is also included for a webcam, making the MTMA100PL perfectly suited for web conferences.



## MAXIMUM STABILITY

Along with two handles to improve maneuverability, four wheel-locks are provided to ensure your TV and equipment remain securely in place. Simply step down on each pedal to enable the locking mechanism and flick up to release.



## EASY HEIGHT ADJUSTMENT

Using the provided Allen key, adjust the center of your TV anywhere between 54.7" (139 cm) and 66.5" (169 cm) from the floor to achieve an ideal viewing height. This adjustment should be done with the TV removed.



## INTEGRATED CABLE MANAGEMENT

The hollow towers allow you to discreetly route your cables for a clean and professional appearance. Grommets are also provided to keep your cables securely in place.



## VESA COMPLIANT

Designed to fit most 60" to 100" flat screen TVs, the TV mounting brackets can be configured to accommodate virtually any VESA pattern from 200x200 to 1000x600.

## TECHNICAL ILLUSTRATIONS

### SHELF AND TRAY

