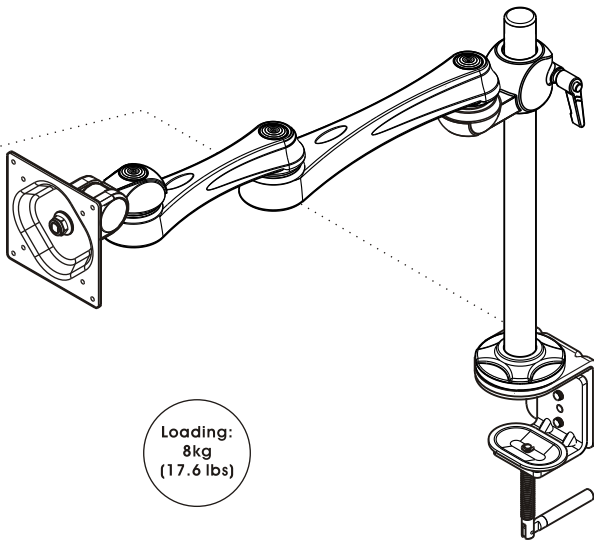


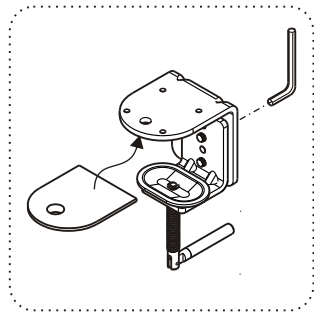
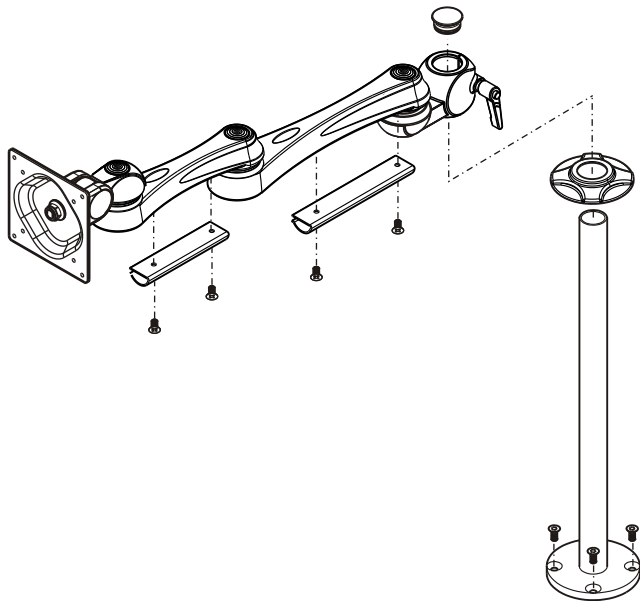
User Manual

LCD Monitor Arm **LA-51-1D**



Loading:
8kg
(17.6 lbs)

LCD Monitor Arm LA-51-1D



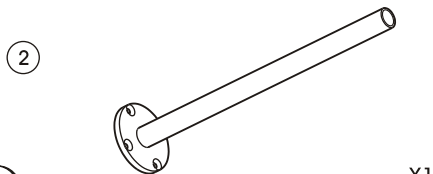
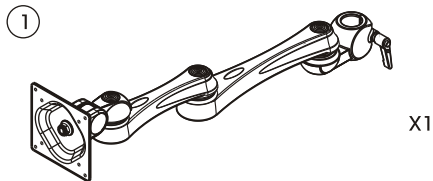
English Version	01-07
French Version	08-14
German Version	15-21
Spanish Version	22-28

Assembly Guide

English Version

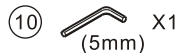
To mount your flat panel monitor or any parts at an ergonomically correct position, start at step 1 and continue as directed.

Part Check-List

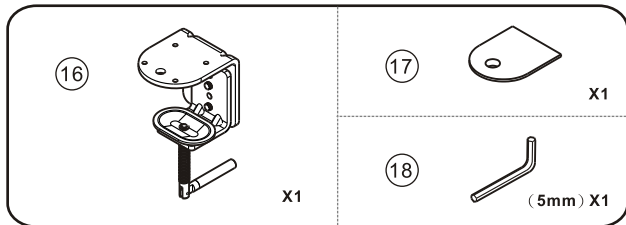
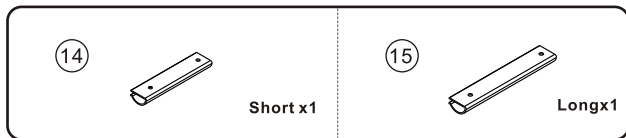


01

Fitting/Tools Check-List-(1)

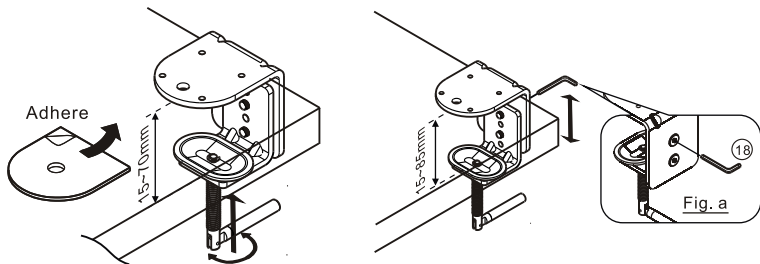


Fitting Check-List-(2) _____



Step 1

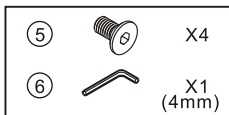
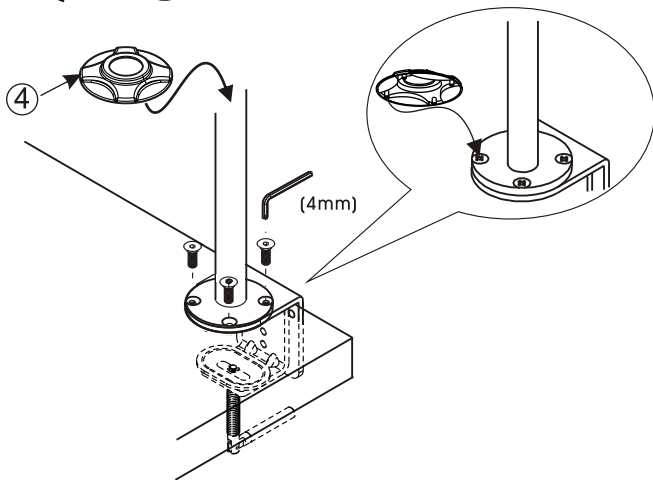
Adhere the pad to the clamp base.
Desk thickness from 15mm~70mm. Then fix the clamp on the desk. If desk thickness over 70mm, please adjust screws with 5mm Allen Key. (as figure a.)



Step 2

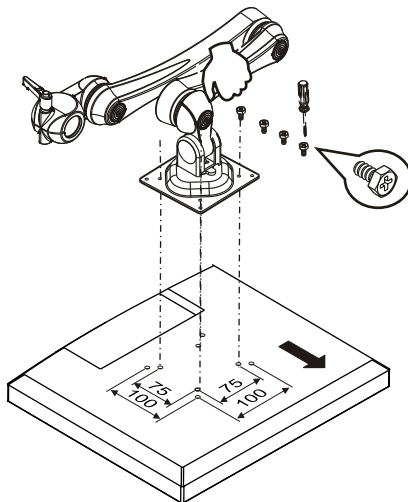
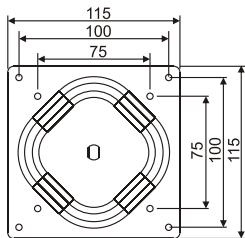
Use 4mm Allen key to secure the pole and clamp with 4 screws.

Then put the plastic cover ④ through the pole and check the pin position with the screw together.



Step 3

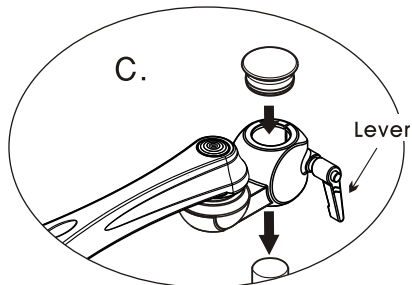
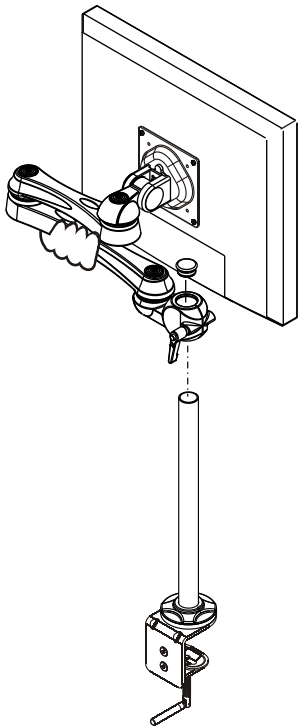
Place LCD with facing downward on flat surface. Place VESA on the LCD back as figure and align to the screwholes. Secure them together with four screws. And then tighten them up with screwdriver(not provided).



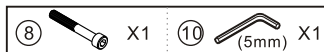
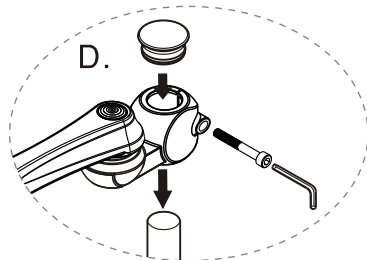
Step 4

Insert the arm (with LCD monitor on already) into the pole. Adjust the level of high to the most comfortable view.

Use the lever to tighten the arm (as figure C.) or secure it with one screw (as figure D) and then put in the plug.

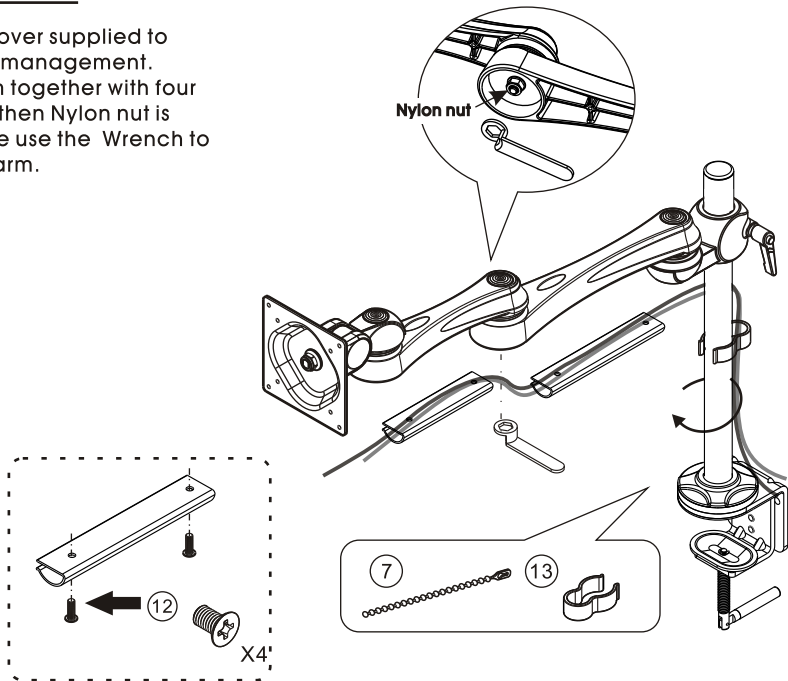


OR



Step 5

Use cable cover supplied to finish cable management. Secure them together with four screws. And then Nylon nut is loose, please use the Wrench to tighten the arm.



Range of use angle:

