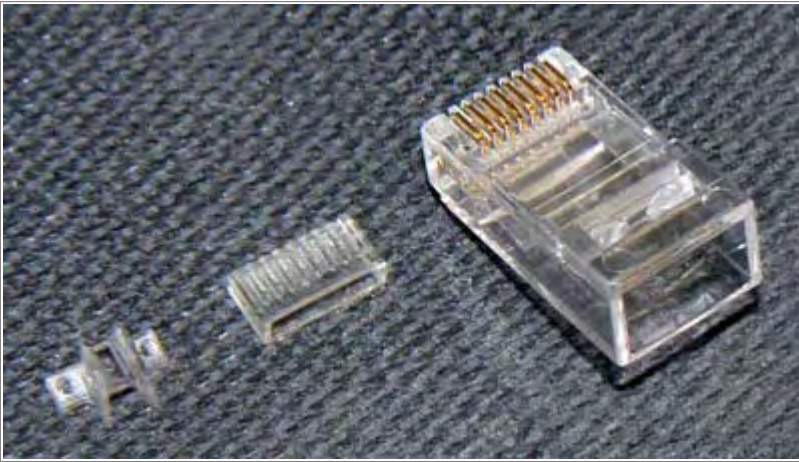


## Tutorial for C6-452A



These are the pieces you will need for RJ45 assembly.

Optional tools -

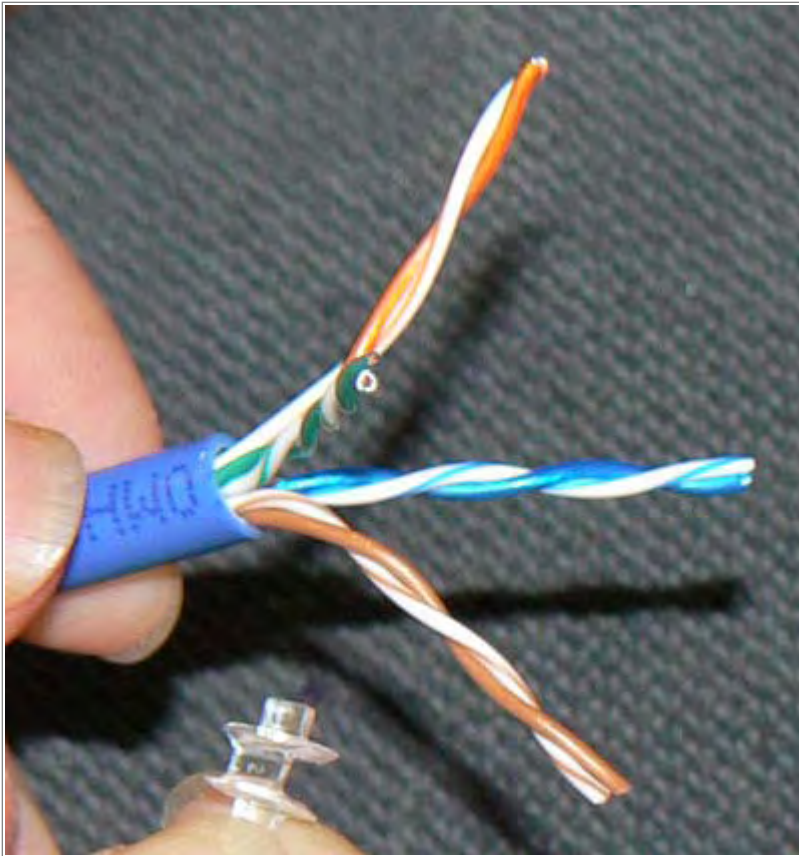
- Universal stripping tool
- RJ45 crimper
- Cable cutter
- CAT6 cable



Strip about an inch of the CAT6 cable.



It should look like this.



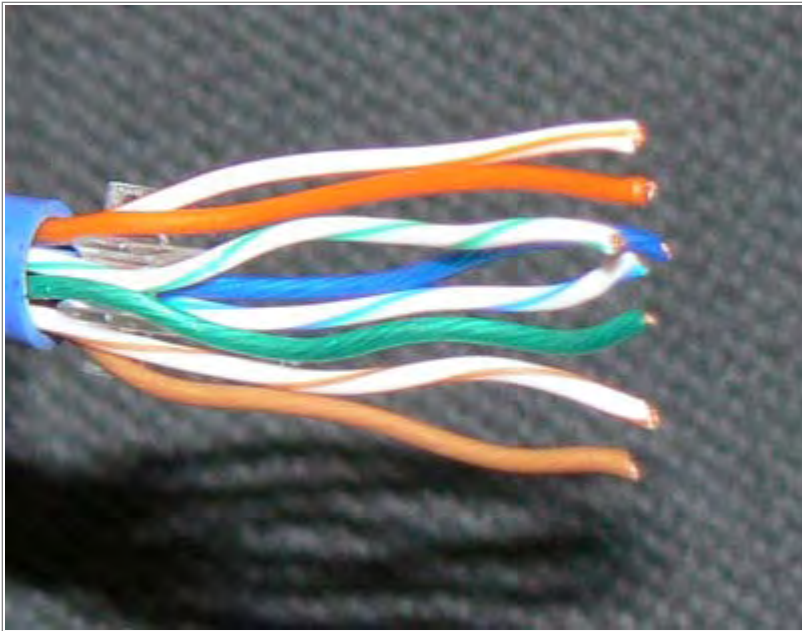
**Seperate the wires.**



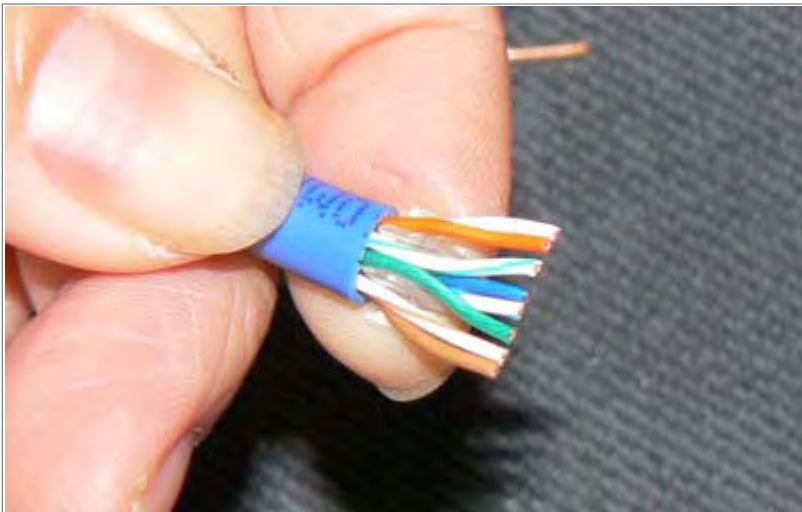
**Place the green wire on top of the small stub.**



**Place the blue wire on the bottom slot of the small stub.**



**Untangle the wires.**



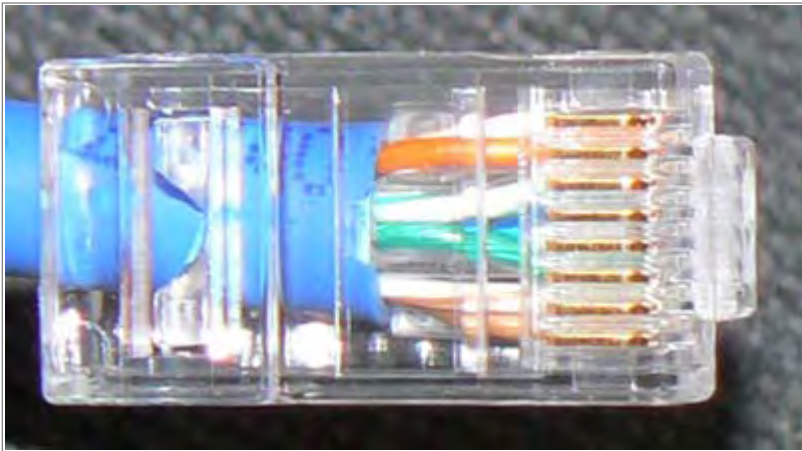
**Trim the wires.**



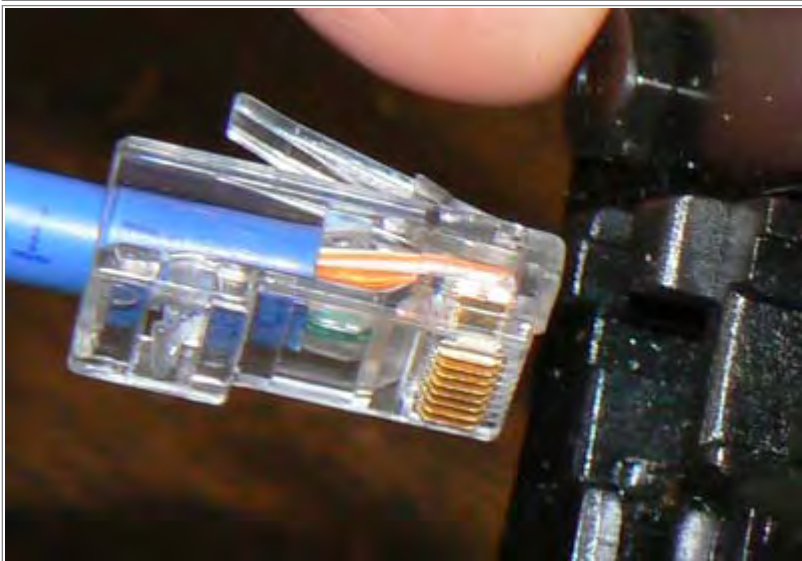
**Confirm wire order and slide on the wire cover. The wire cover will have an open side (with 8 slots) and a solid side. As shown in the picture, the open side should be up, and the orange and white-orange wires will be on the right. The wires should reach to near the end.**



**Slide on the connector.**



**The cable sleeve should reach the end.**



**Crimp the connector. If you are not able to crimp, check the wire sleeve orientation.**